

# Hydrocore's U-Cone Taper Pipe Coupling



# U-Cone Taper Pipe Coupling

Ratings: 64 bar - 250 bar

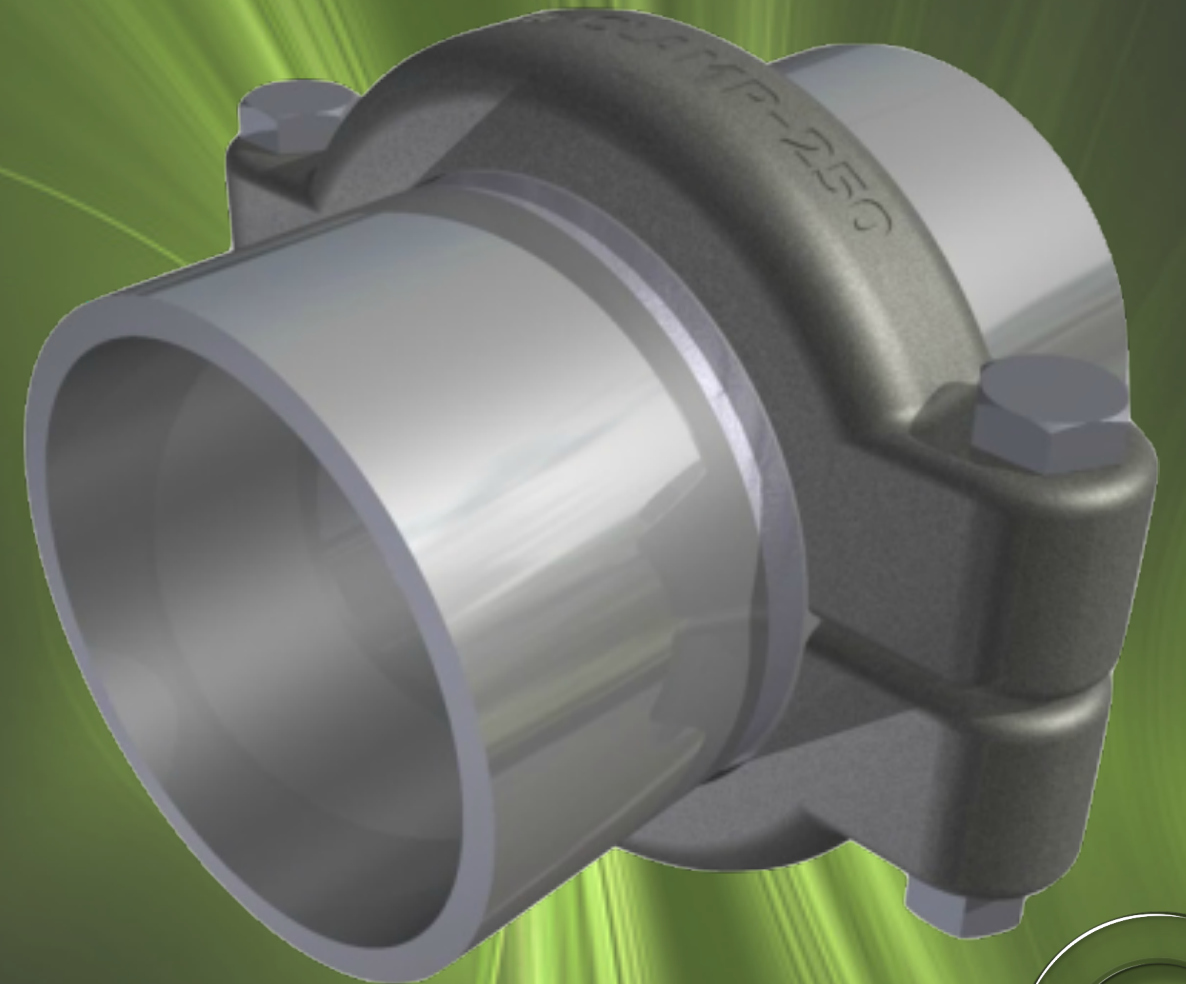
## History

With thousands of Hydrocore™ U-Cone tapered pipe couplings installed throughout mines in Southern Africa, the Hydrocore™ U-Cone tapered pipe coupling is a tried and tested alternative to flange coupling.

## Features and Benefits

The Hydrocore™ U-Cone tapered pipe coupling is an alternative to flange couplings for any horizontal or inclined pipeline.

- Occupies small space
- Low cost compared to flanges
- Quick and easy handling of pipes in the shaft
- Seals are not affected by water hammer occurrence

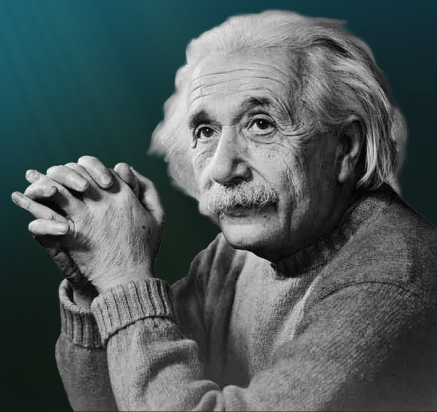


*Design Code: Ansi B31.3 And Boilers & Pressure Vessels Code*

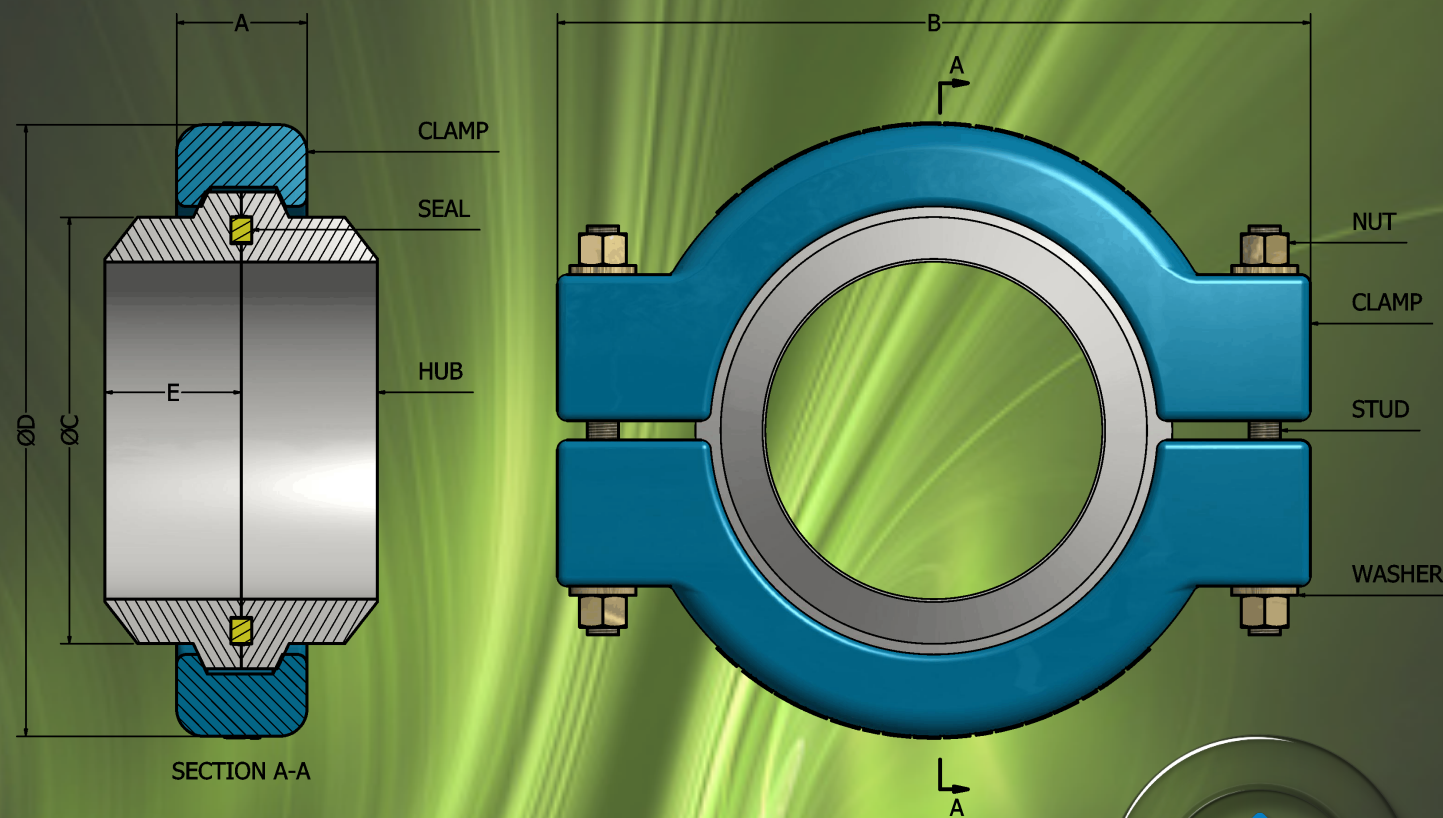
Specifications	Material
Clamp	Cast Steel B3100 Grade 2, Coated By 200 Of Epoxy On 30 Of Zinc Chromate
Hub	St52 Or Equivalent, Coated To Client Specification
Seal	PTFE or UHMWPE
Bolt	Grade 8.8 Or Higher, Electro-Galvanised
Nut	Grade 8.0, Electro-Galvanised
Washer	Grade 8.0, Electro-Galvanised
Welding	Hubs are prepared for standard butt welding



*Any intelligent fool can make things bigger and more complex... It takes a touch of genius – and a lot of courage to move in the opposite direction.*



# Parts and Specifications



## 64 Bar Rating

Pipe NB	50	65	80	100	150	200	250	300	350	400	450	500
A	40	40	42	45	50	55	60	65	70	75	80	85
B	128	143	196	207	284	349	425	497	552	600	669	750
C	60	73	89	114	168	219	273	324	356	406	457	508
D	106	119	141	172	236	295	365	424	458	524	585	644
E	17	19	21	23	30	32	38	41	45	48	55	57
No. of bolts	2	2	2	2	4	4	4	4	4	4	4	4
Bolt Ø	8	8	10	12	16	16	16	20	24	24	27	33
Hub Weight	0.4	0.6	1	1.3	3.2	4.7	8.5	11.4	15.3	19.4	28.3	34.3
Clamp Weight	0.7	0.7	1	1.7	3	4.9	7.8	11.5	15.5	20.3	25.8	33.6

## 100 Bar Rating

Pipe NB	50	65	80	100	150	200	250	300	350	400	450	500
A	40	40	42	45	50	60	76	90	100	110	130	140
B	128	143	169	207	284	349	433	504	548	619	703	764
C	60	73	89	114	168	219	273	324	356	406	457	508
D	106	119	141	172	236	295	365	424	460	514	575	630
E	17	19	21	23	30	32	38	41	45	48	55	57
No. of bolts	2	2	2	2	4	4	4	4	4	4	4	4
Bolt Ø	8	8	10	12	16	16	20	24	27	30	36	39
Hub Weight	0.4	0.6	1	1.3	3.2	4.7	8.5	11.4	15.3	19.4	28.3	34.3
Clamp Weight	0.7	0.7	1	1.7	3	5.4	10.5	16.7	20.9	27.2	39.6	49.4

## 160 Bar Rating

Pipe NB	50	65	80	100	150	200	250	300	350	400	450	500
A	40	40	42	45	50	78	88	98	106	145	•	•
B	128	142	169	207	284	366	443	509	552	675	•	•
C	60	73	89	114	168	219	273	324	356	406	•	•
D	106	119	141	172	236	305	369	424	460	524	•	•
E	17	19	21	23	30	34	42	45	50	53	•	•
No. of bolts	2	2	2	2	4	4	4	4	4	4	•	•
Bolt Ø	8	10	12	16	16	24	27	30	33	39	•	•
Hub Weight	0.4	0.6	1	1.3	3.2	5.4	10	13.7	18.7	23.5	•	•
Clamp Weight	0.7	0.8	1	1.8	3.3	9.2	14	19.1	23.3	40.9	•	•

## 250 Bar Rating

Pipe NB	50	65	80	100	150	200	250	300	350	400	450	500
A	40	40	42	45	65	84	105	120	•	•	•	•
B	128	144	169	207	298	376	463	532	•	•	•	•
C	60	73	89	114	168	219	273	324	•	•	•	•
D	106	123	145	172	248	315	387	446	•	•	•	•
E	17	21	24	28	37	42	52	57	•	•	•	•
No. of bolts	2	2	2	2	4	4	4	4	•	•	•	•
Bolt Ø	10	12	16	16	20	27	33	39	•	•	•	•
Hub Weight	0.6	0.7	1	1.9	4.9	8.1	15.4	21.8	•	•	•	•
Clamp Weight	0.7	1	1	1.8	5.5	11.9	22.1	32.4	•	•	•	•

- All dimensions are in millimetres
- All weights are in kilograms
- The manufacturer reserves the right to change the dimensions and specifications without prior notice.

# Hydrocore's U-Cone Taper Pipe Coupling



**Contact**

**Telephone**

**Email**

**Website**

**Guy Kedar**

**083 299 3050**

**[guy@hydrocore.tech](mailto:guy@hydrocore.tech)**

**[www.hydrocore.tech](http://www.hydrocore.tech)**